

WATT Telescoping Valve

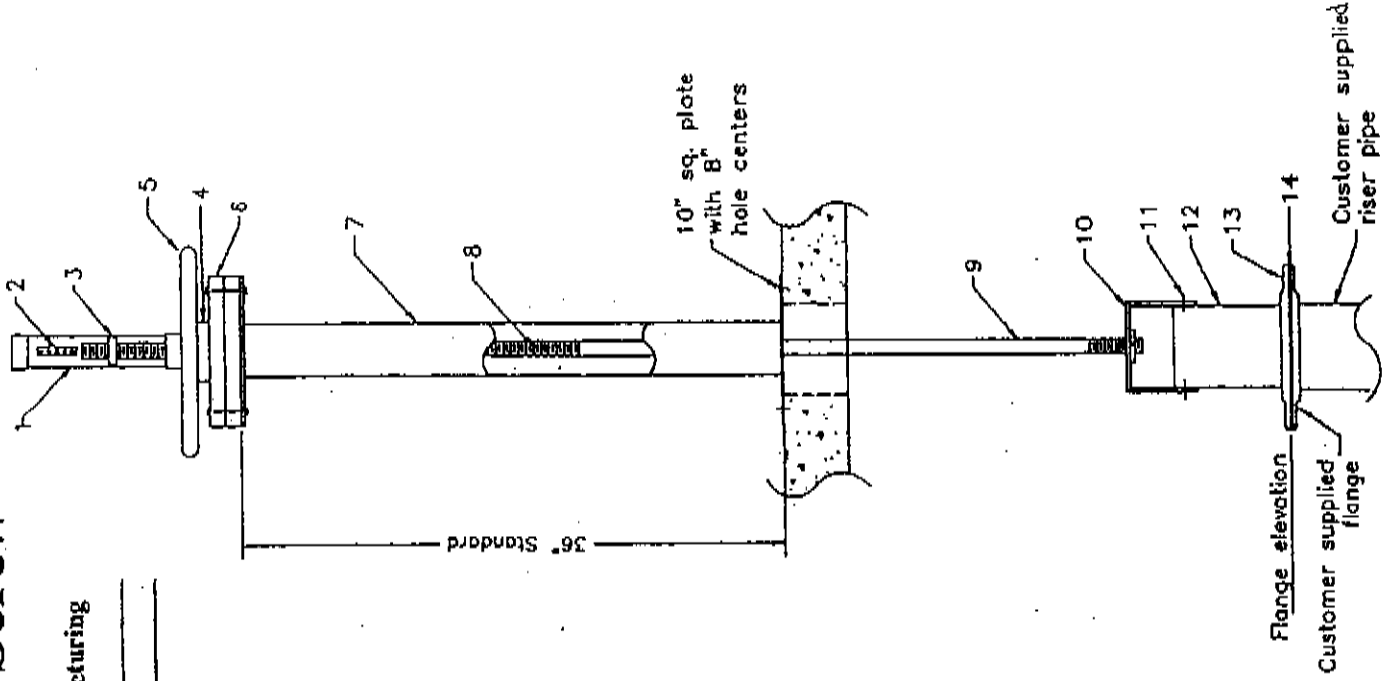
Rising Stem Screw

Standard Valve		
Item	Description	Material
1	Screw cover	clear pvc
2	Scale	aluminum
3	Limiting nuts	aluminum
4	Nut	bronze
5	14" handwheel	aluminum
6	Housing	aluminum
7	Floorstand	stainless steel
8	Lift screw	stainless steel
9	Lift rod	stainless steel
10	Bail	stainless steel
11	Fasteners	stainless steel
12	Slip Pipe	stainless steel
13	Flange	cast iron
14	Gasket	neoprene

Approved for manufacturing

by: _____

Date: _____



Options		
Description	Material	Check
Offset floorstand	304 stainless steel	
Wallbracket	304 stainless steel	
Electric operator		
Scurra baffle	aluminum	
Vee Notch		
18" handwheel	aluminum	
Flange ass'y	304 stainless steel	
Anchor bolts	304 stainless steel	
Anchor bolts	316 stainless steel	
Funnel	304 stainless steel	size
Scale	nylar	
Scale	304 stainless steel	

Contractor to provide the following:

Floor elevation: _____

High water elevation: _____

Low water elevation: _____

Flange elevation: _____

Floor thickness: _____

Project: _____

Contractor: _____

Sales Representative: _____

Size: _____ Qty: _____

Latanick Equipment, Inc. Job #: _____

Latanick Equipment[®], Inc.

720 River Road

Huron, Ohio 44839

Ph. (419)433-2200

Fax (419)433-6261

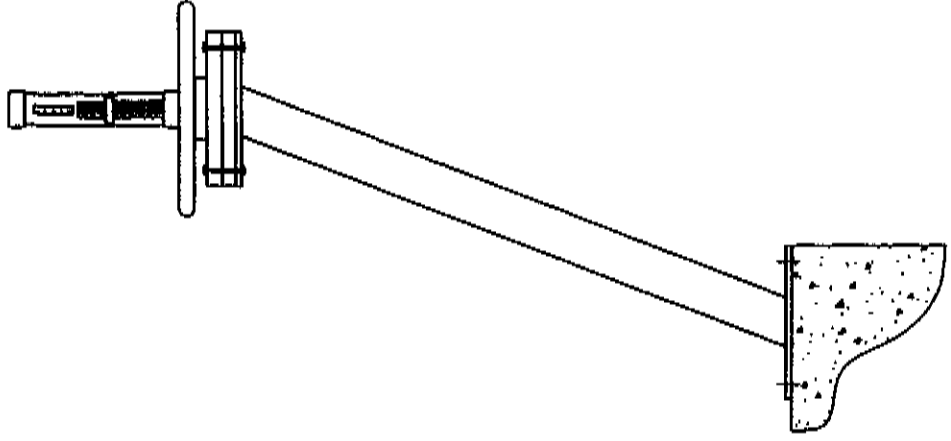
Rising Stem Screw WATT Telescoping Valve Specifications

The Rising Stem Screw WATT Telescoping Valve is shipped as a complete assembly ready for easy installation. Each standard valve consists of a screw cover, position indicator, screw, hand wheel, housing, standard floor stand, lifting rod, bail, fasteners, slip pipe, flange and gasket.

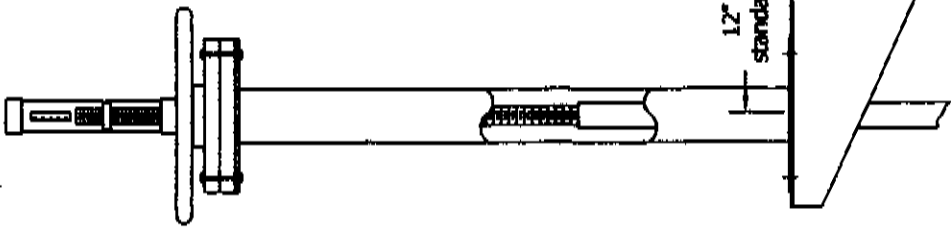
The screw cover is a clear PVC tube capped. Attached to the cover is an aluminum position indicator calibrated in 1/8" increments. The cover encloses a 1 1/4"-4 double start stainless steel acme lifting screw. The anodized aluminum housing consists of a bronze nut, stainless steel ball thrust bearing and an anodized aluminum 14" diameter hand wheel. The 1" diameter lifting rod, bail, slip pipe and fasteners are made of 304 stainless steel. The companion flange will be cast iron unless 10" or larger. In this case it will be 304 stainless steel. Options are available upon request.

Telescoping valves shall be manufactured by Latanick Equipment®, Inc.

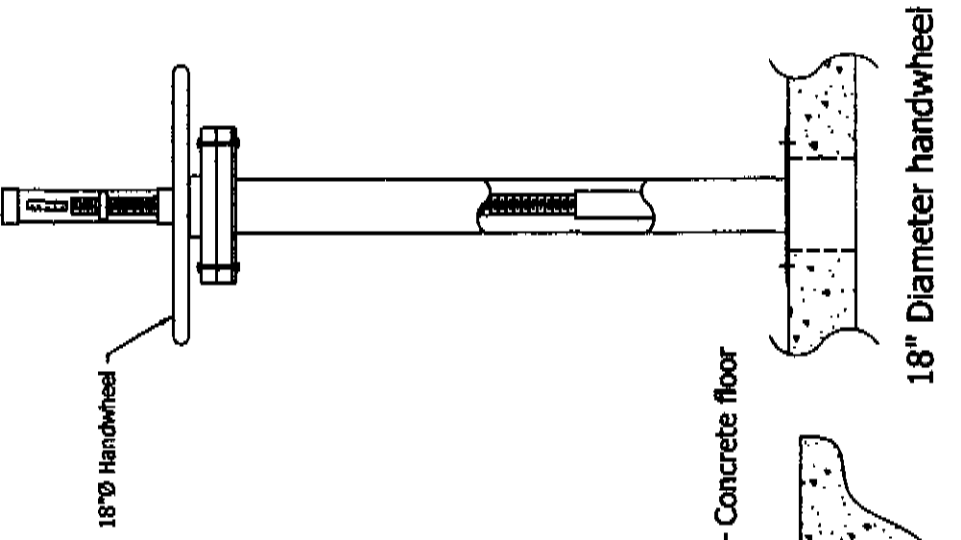
Rising Stem Screw Options



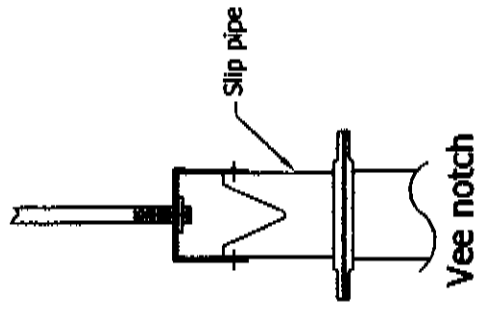
Offset floorstand



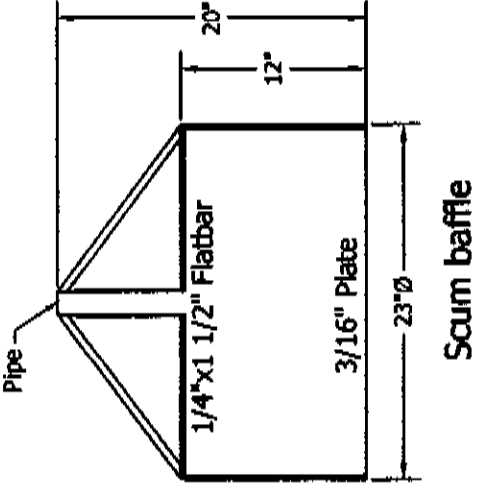
Wallbracket



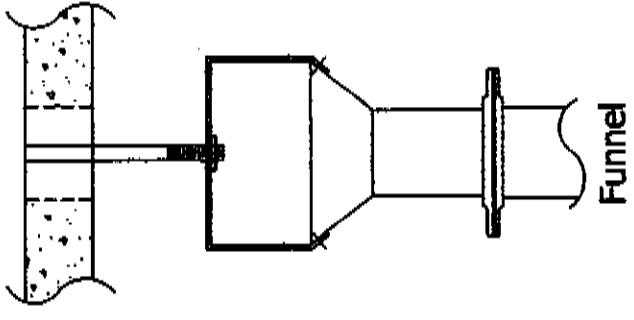
18" Diameter handwheel



Vee notch



Scum baffle



Funnel

WATT Telescoping Valve

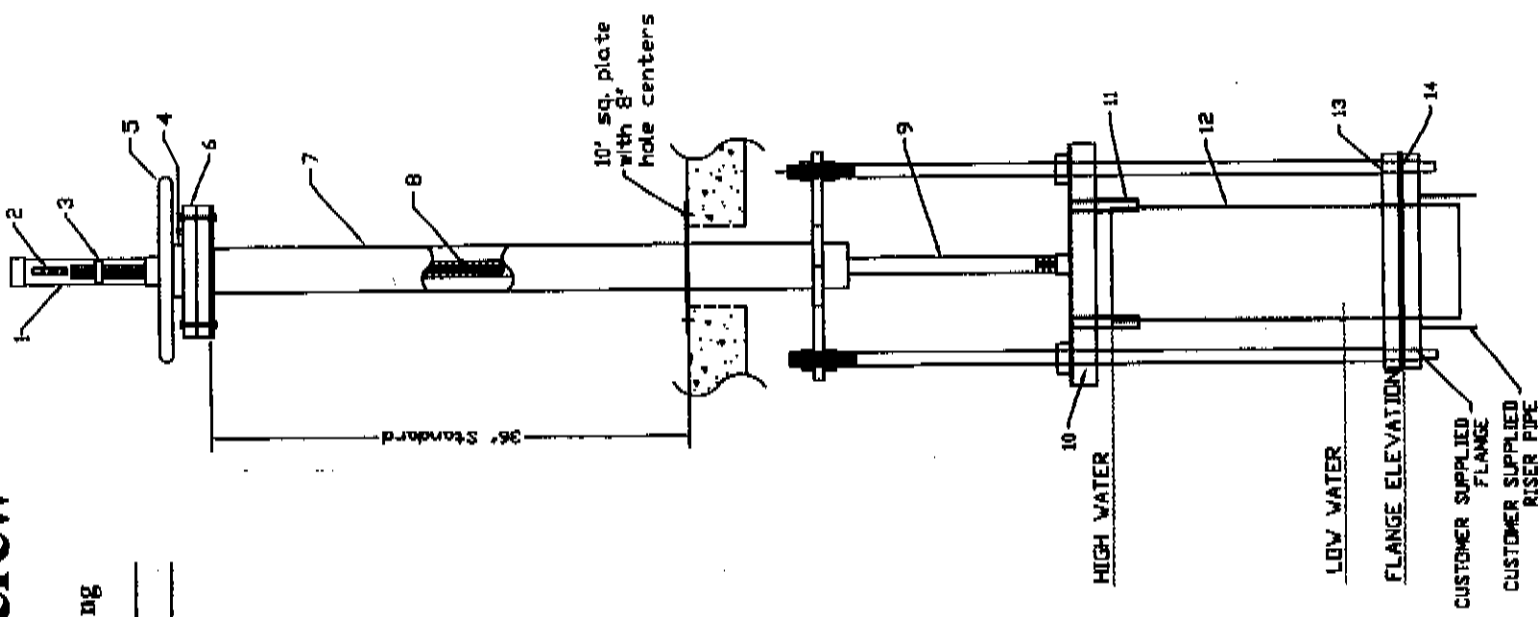
Rising Stem Screw

Standard Valve		
Item	Description	Material
1	Screw cover	clear pvc
2	Scale	aluminum
3	Limiting nuts	aluminum
4	Nut	bronze
5	14" handwheel	aluminum
6	Housing	aluminum
7	Floorstand	stainless steel
8	Lift screw	stainless steel
9	Lift rod	stainless steel
10	Bail	stainless steel
11	Fasteners	stainless steel
12	Slip Pipe	stainless steel
13	Flange	cast iron
14	Gasket	neoprene

Approved for manufacturing

by: _____

Date: _____



Options		
Description	Material	Check
Offset floorstand	304 stainless steel	
Wallbracket	304 stainless steel	
Electric operator		
Scum baffle	aluminum	
Vee Notch		
18" handwheel	aluminum	
Flange ass'y	304 stainless steel	
Anchor bolts	304 stainless steel	
Anchor bolts	316 stainless steel	
Funnel	304 stainless steel	size
Scale	nylar	
Scale	304 stainless steel	

Contractor to provide the following:

Floor elevation: _____

High water elevation: _____

Low water elevation: _____

Flange elevation: _____

Floor thickness: _____

Project: _____

Contractor: _____

Sales Representative: _____

Size: _____ Qty: _____

Latanick Equipment, Inc. Job # : _____

Latanick Equipment®, Inc.

720 River Road

Huron, Ohio 44839

Ph. (419)433-2200

Fax (419)433-6261

Latamick Equipment, Inc.

STEEL FABRICATORS

**MANUFACTURING & SALES
720 RIVER ROAD
HURON, OHIO 44839
PHONE (419) 433-2200
FAX # (419) 433-6261**

WATT Telescoping Valve Storage Instructions

- 1) **DO NOT** drop the shipping crate.
- 2) Inspect contents of crate upon receiving-**ANY DAMAGE MUST BE REPORTED WITHIN 48HRS.**
- 3) For long term storage, repack crate as received.
- 4) **DO NOT** stack on top of crate.

Component: WATT Telescoping Valve

Manufacturer: Latamick Equipment®, Inc.
720 River Road
Huron, Ohio 44839
(419)433-2200

Latanick Equipment, Inc.

STEEL FABRICATORS

**MANUFACTURING & SALES
720 RIVER ROAD
HURON, OHIO 44839
PHONE (419) 433 - 2200
FAX # (419) 433 - 6261**

WATT Telescoping Valve Warranty

“WATT Telescoping Valves”, manufactured by Latanick Equipment®, Inc. have a (1) year warranty against defects in materials and workmanship. Defective parts must be returned freight pre-paid and we will make the appropriate repairs or replace the part and return the parts freight pre-paid.

Latanick Equipment, Inc.

STEEL FABRICATORS

MANUFACTURING & SALES
720 RIVER ROAD
HURON, OHIO 44839
PHONE (419) 433 - 2200
FAX # (419) 433 - 6261

Rising Stem Screw WATT Telescoping Valve Installation Instructions

- 1) Insure riser pipe is installed vertically.
- 2) Make certain valve operator is positioned vertically on the riser pipe center line. Proper installation insures the slip pipe will be raised and lowered vertically with no side to side contact with the riser pipe. Use only the stainless steel hardware provided with the valve.
- 3) Grease inside diameter of slip pipe gasket and lower end of slip pipe to facilitate assembly.
- 4) Slide flange and gasket on bottom end of slip pipe to avoid cutting gasket when installing slip pipe in riser pipe.
- 5) Set slip pipe into riser pipe to bottom position.
- 6) Run operator to bottom position to connect lift pipe to slip pipe bail.
- 7) Align flange with the slip pipe and evenly tighten down with the flange bolts.
- 8) Tighten bolts holding slip pipe to bail.
- 9) Run slip pipe all the way up and down to insure full and free travel.
- 10) Check to see that all hardware has been properly tightened.

Note: Valve operator and lift screw are factory lubricated and no lubrication is required at the time of installation. Thereafter, the valve operator grease fitting should be lubricated yearly with multipurpose grease. Valve should be raised to the upper limit of travel with position indicator tube removed so that screw threads may be wiped with grease. Replace tube if cracked to protect lift screw from weather.

Latanick Equipment, Inc.

STEEL FABRICATORS

MANUFACTURING & SALES
720 RIVER ROAD
HURON, OHIO 44839
PHONE (419) 433-2200
FAX # (419) 433-6261

Rising Stem Screw WATT Telescoping Valve Maintenance Procedure

- 1) Once per year the following items need to be greased with multipurpose grease.
 - a. Remove clear plastic tube by unscrewing from operator top. Wipe screw threads with grease and replace tube.
 - b. Pump (3) shots of grease into fitting on operator housing.
- 2) Wash all caked on scum off slip pipe and neoprene gasket annually or as required.
- 3) Insure all fasteners are tight from top to bottom of valve. Inspect annually.
- 4) Replace neoprene gasket at riser pipe as required.

Note: DO NOT over tighten flange bolts.